



The Environment and Gender Information (EGI) platform:

Providing knowledge to guide actions

NATALIA ARMIJO CANTO
ITZÁ CASTAÑEDA CAMEY
GENDER SUMMIT 8
28-29TH MAY, MEXICO CITY



IUCN Environment and Gender Information (EGI)

- Comprehensive platform that aims to convey the value of gender equality data and information through and for the benefit of environmental conservation/sustainable development
- Guide action towards a more just world by providing new evidence-based information and knowledge products
- Resource to influence, encourage and assist governments and civil society, to propel gender-responsive environmental policy, practice, and communication





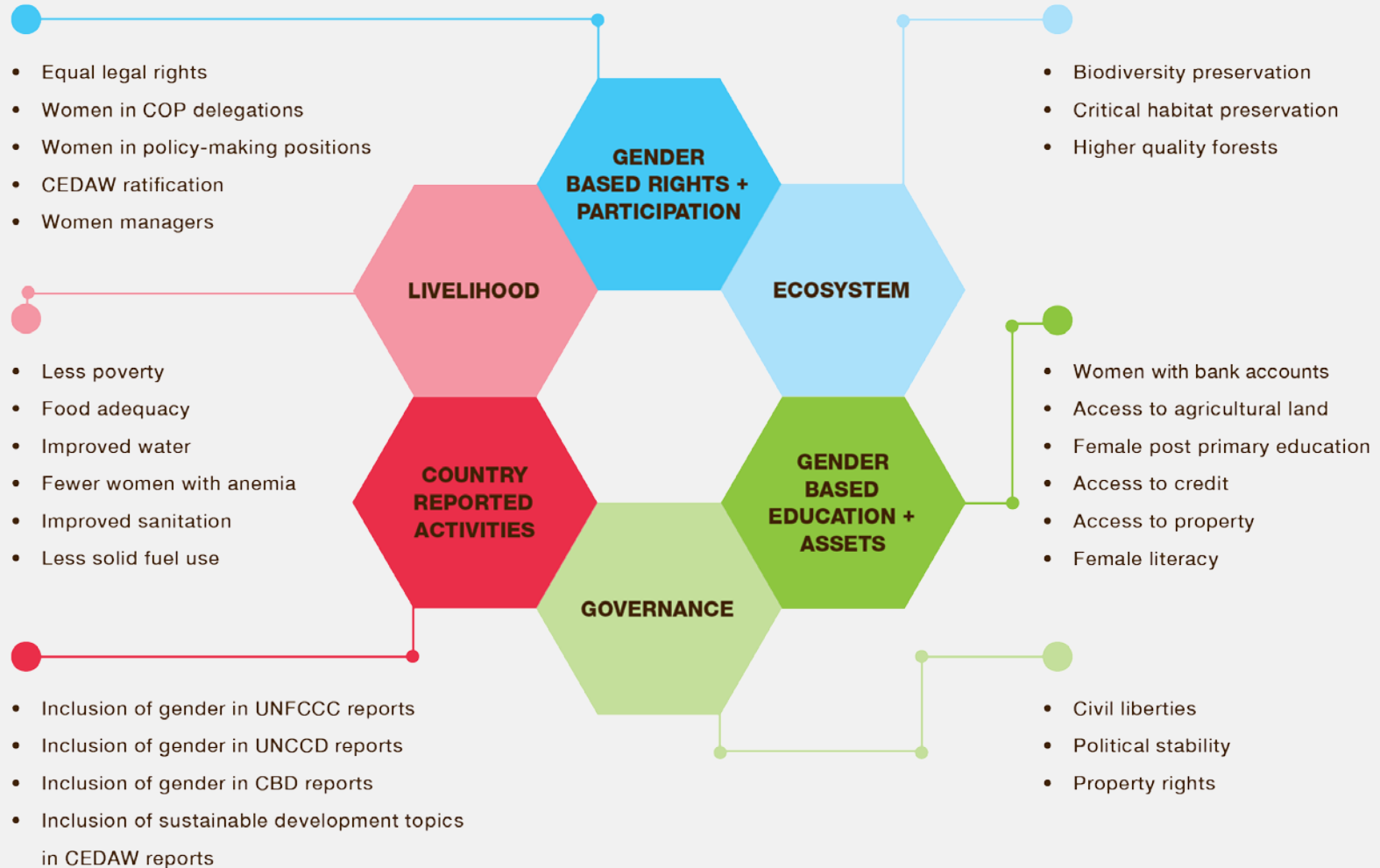
EGI pilot phase: ranking countries; revealing gaps

- Identifying a need for a consolidated source of information on gender and environment variables, IUCN launched in 2013, the Environment and Gender Index
- Composite index ranking more than 70 countries along 27 indicators divided into six categories
- The world's first tool to monitor progress toward gender equality in the environmental arena
- Belief behind EGI: Gender equality and women's empowerment are necessary for sustainable development





The EGI Framework



EGI- Key Findings

- Information about women's role and access in environment-related sectors is not collected and reported
- Sex-disaggregated data with broad country coverage in sectors such as forestry, agriculture, water, energy, marine, disasters, infrastructure, etc. does not exist
- Implementation of global international agreements on gender and environment is lacking in most countries
- The global average for women's participation in inter-governmental negotiations on climate change, biodiversity, and desertification has peaked at 36
- From the grassroots to policy levels, stakeholders recognizes the powerful co-benefits to advancing equity and sustainability and the major information gaps remaining





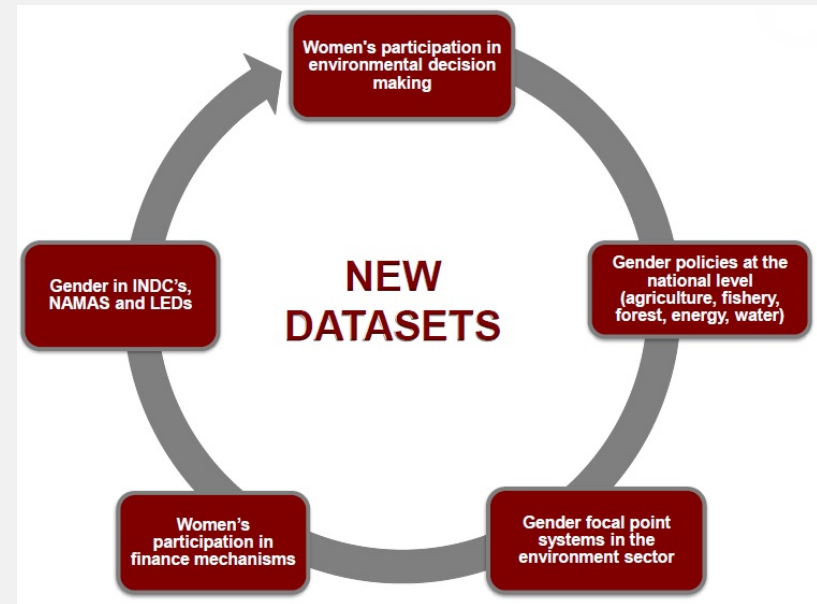
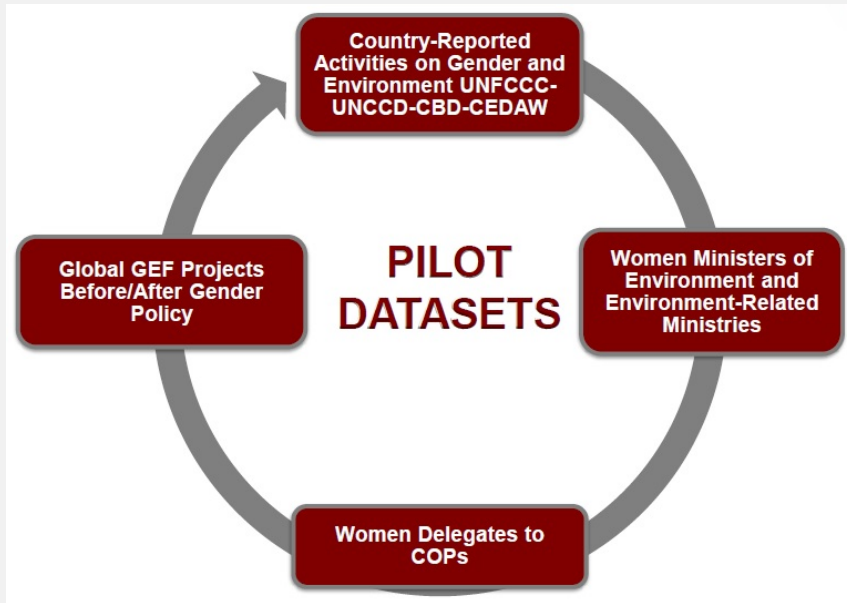
From “Index” to “Information”: knowledge creation and analysis for guiding actions

- The process of developing the index revealed an important trend: data and knowledge gaps exist broadly across the environment sector
- This lack of information makes it challenging to guide actions toward gender-responsive initiatives and policies and more difficult to measure progress
- Since 2013, the EGI has evolved to comprehensively address this gap
- In 2016, the EGI—or the Environment and Gender Information (EGI) platform—has grown into an umbrella knowledge platform under which IUCN will continue, dataset by dataset, to fill data gaps





From “Index” to “Information”: knowledge creation and analysis for guiding actions

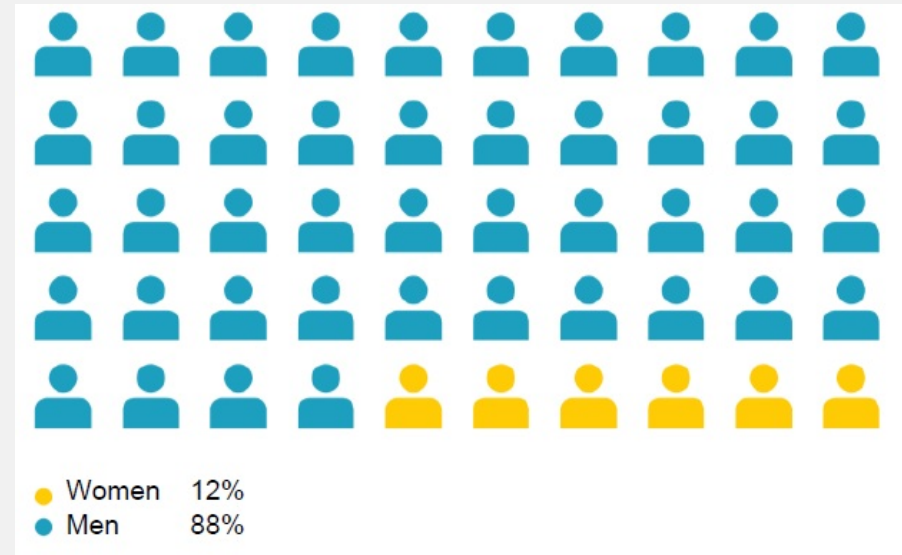
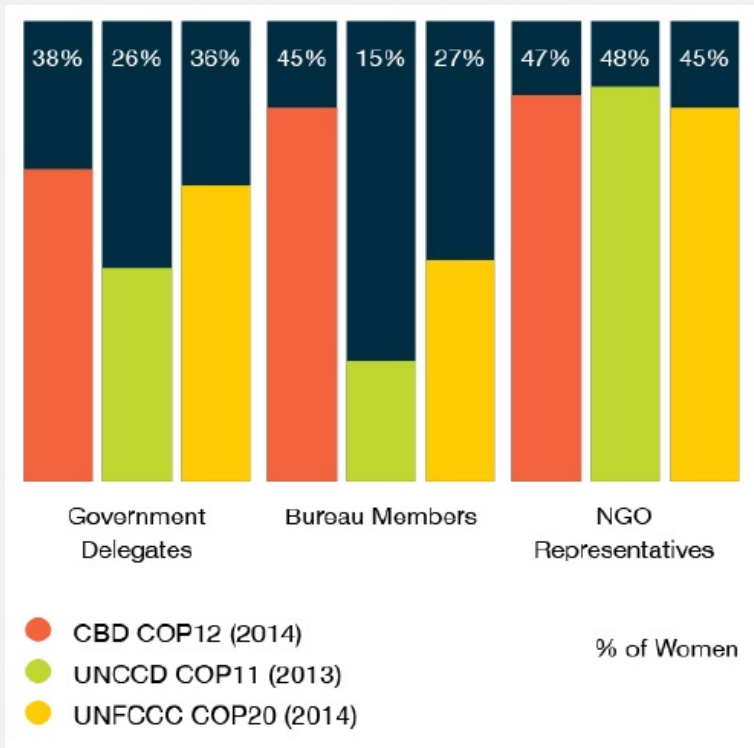


IUCN has worked closely with strategic partners toward the creation of many of these datasets



From “Index” to “Information”: knowledge creation and analysis for guiding actions

Women’s participation in the Río Conventions



Heads of National Environmental-Sector Ministries



Partnerships and synergies

- With Conservation International: in-depth national-level case studies and analysis of gender in national REDD Preparation Proposals
- With the Convention on Biological Diversity Secretariat: Gender analysis of all National Biodiversity Strategies and Action Plans to contribute key information inputs toward achieving the Aichi Biodiversity Targets
- EGI research has contributed to and been intertwined with other IUCN projects





Next steps: ensuring expert guidance, access to information and flexibility

- Strict adherence to methodological and statistical rigor as the strategic focus of the EGI shifts from the pilot index to creation of global datasets
- Enhancing the technical advisory panel is a key aspect to ensuring methodological cohesion and accuracy
- Ensure accessibility and usability of data and associated knowledge products
- While the current strategic focus is on closing data gaps, dataset by dataset, the EGI team expects to develop an updated and expanded second-phase index



Gender and Sustainable Development Assessment in the Yucatan Peninsula



Yucatán Península



- Follow-up to the launch of the Environment Gender Index (EGI)
- Pilot assessment of a subnational context in the context of the EGI
- Analyze the state of gender and environment in the Peninsula, including gender impacts, women's participation and advancement, and governance bottlenecks
- Review the incorporation of a gender perspective in environmental and climate change related policies



Gender and Sustainable Development Assessment in the Yucatan Peninsula

- Contribute to the collection and analysis of quantitative and qualitative data and information, and identify gaps
- Establish a baseline in order to monitor progress
- Identify lessons learned that could spur action in the Yucatan Peninsula
- Convene a group of interested individuals and institutions to collaborate on this endeavor and build awareness

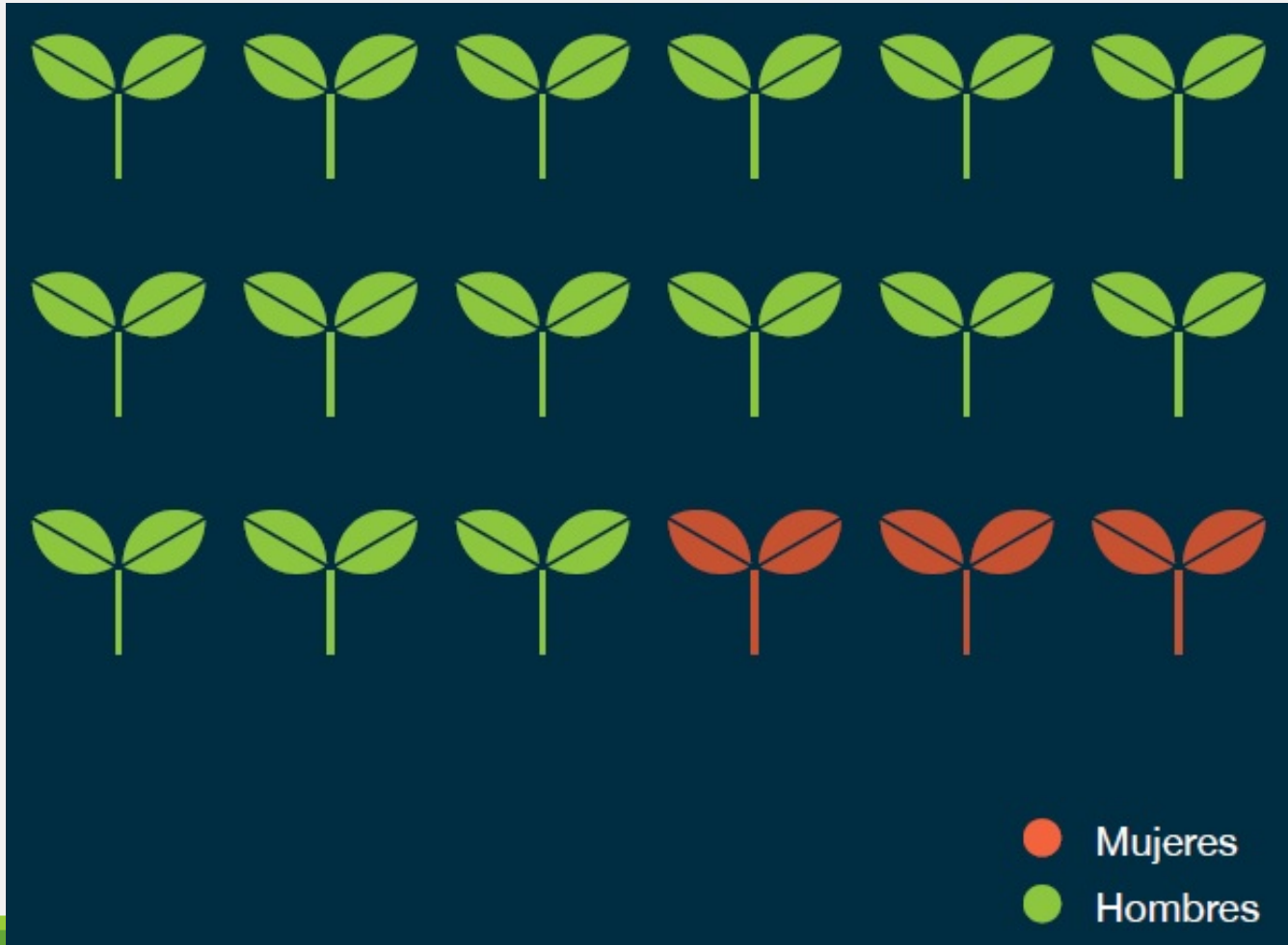




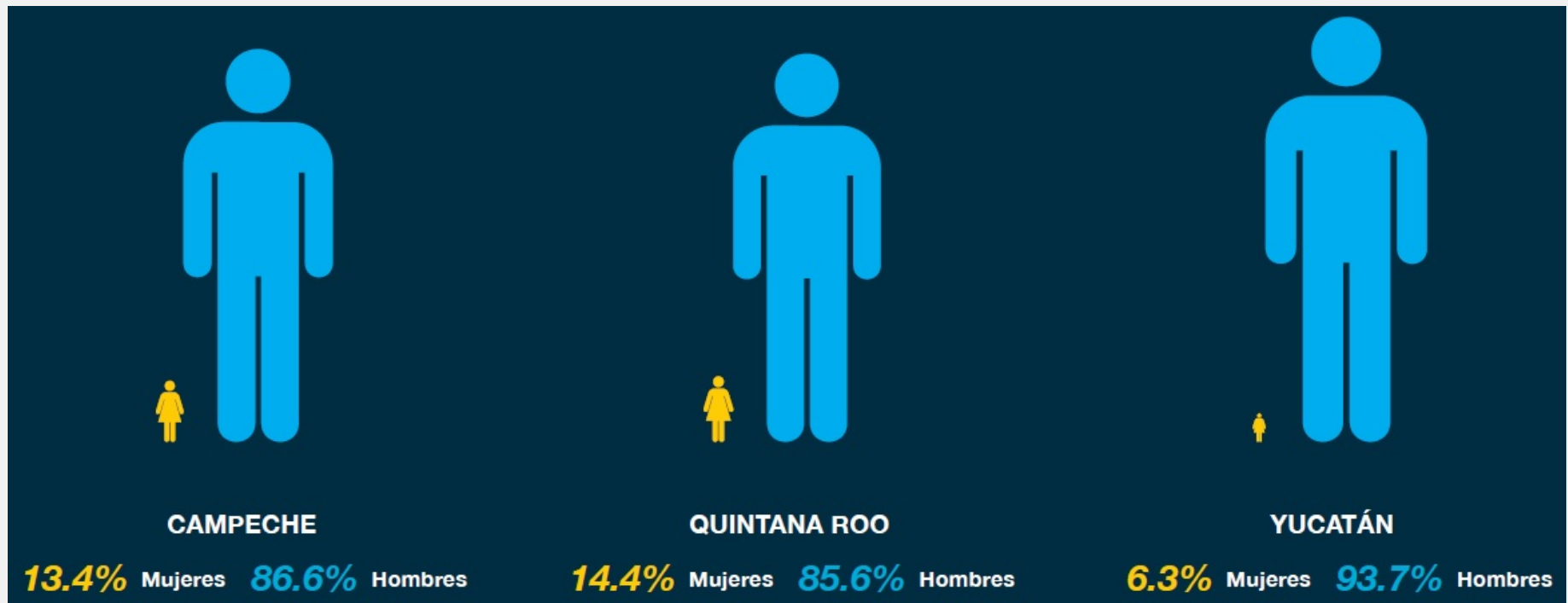
Women at top level of Environmental and Rural Institutions, and women's participation in Advisory and Technical Councils related to environment in the Yucatan Peninsula



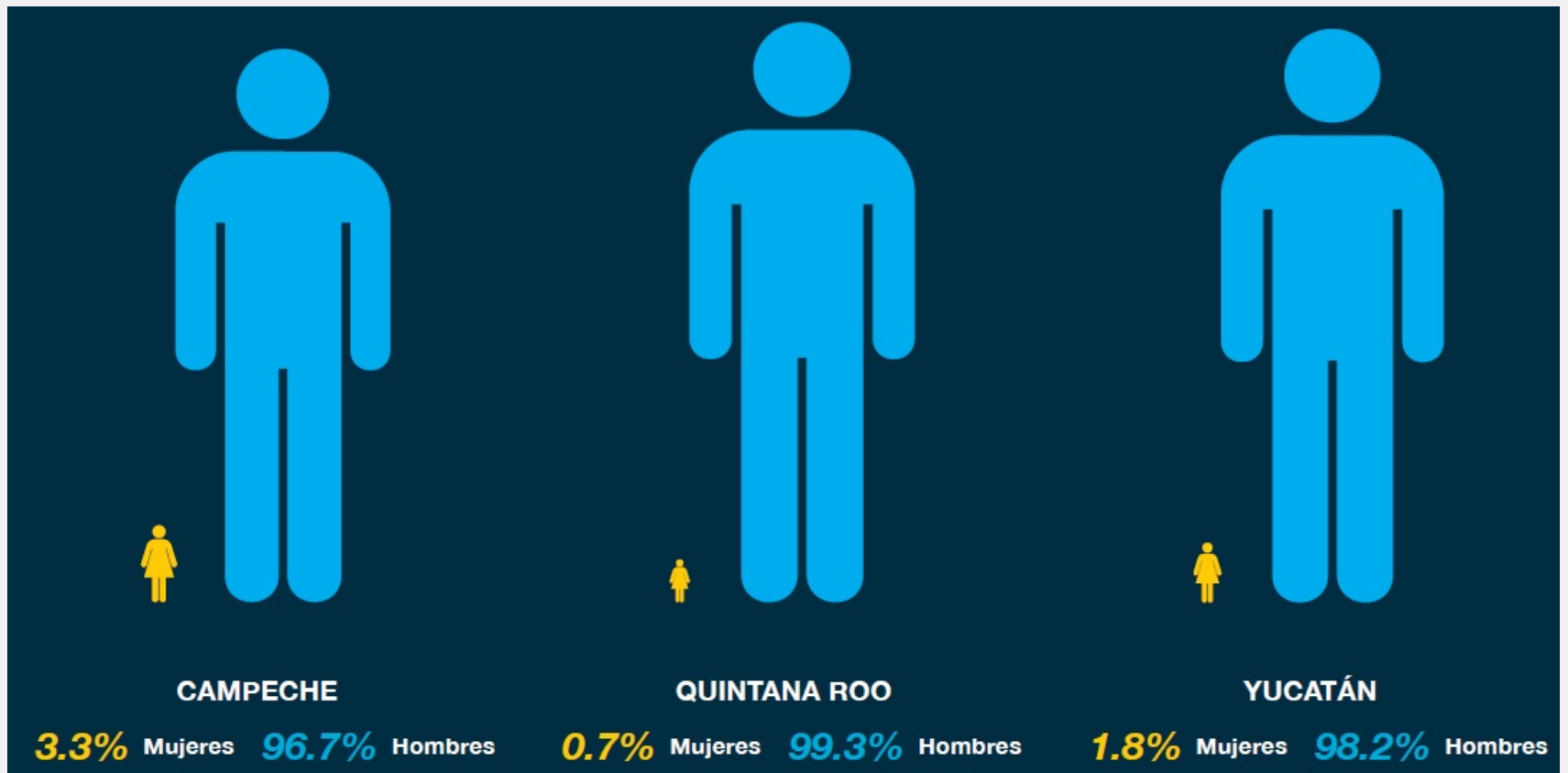
Women and Men Directors of Natural Protected Areas in the Yucatan Peninsula, 2015



Land Property Rights in the Yucatan Peninsula, 2014



Head of “Comisariado Ejidal” , 2014 (Decision Making Instance in rural Mexico)





At grassroots and policy level, local, national and internationally, IUCN is committed to its vision of realizing more gender-responsive policies and programs, at all levels, for a more sustainable and equitable world—and creating the data required as a means toward that end

THANK YOU